

**UNDERCOUNTER FREEZER SERIES**

**MGF8405 / MGF8406 / MGF8407**

**PRODUCT DESCRIPTION**

- Stainless steel exterior and interior construction
- Embraco compressor, heavy duty
- Stay open and self-closing door; standard safety door lock
- Efficient refrigeration system
- Round corner design
- Recessed door handle
- Magnetic door gaskets
- Pre-installed castors and shelves
- 155 lbs loading capacity per shelf



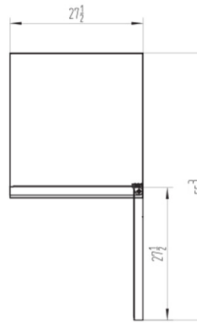
MGF8405



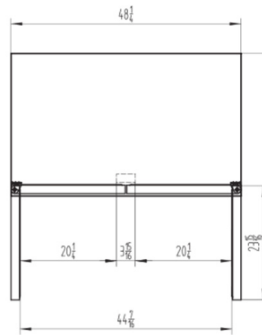
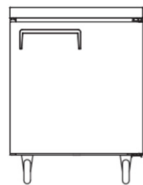
MGF8406



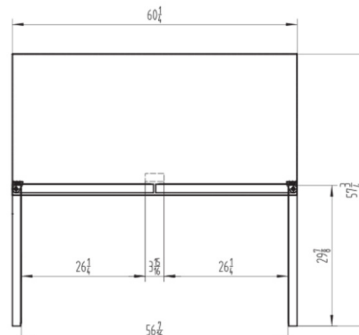
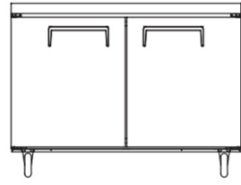
MGF8407



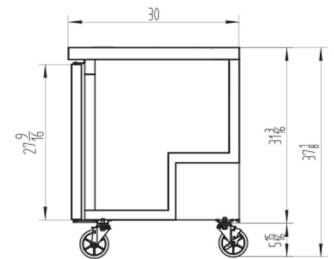
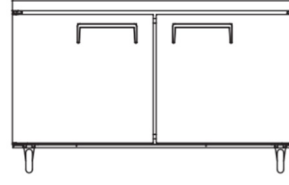
MGF8405



MGF8406



MGF8407



**SPECIFICATIONS**

| Model           | Doors | Cu.Ft | Shelves | Exterior Dimensions (W*D*H) | Packing Dimensions (W*D*H) | Castors | Gross Weight (LBS) | HP  | Voltage  | Amps | Refrigerant |
|-----------------|-------|-------|---------|-----------------------------|----------------------------|---------|--------------------|-----|----------|------|-------------|
| <b>MGF 8405</b> | 1     | 6.5   | 1       | 27.48 x 30 x 37.16          | 30.3 x 33.6 x 38.2         | 5 inch  | 178.2              | 1/3 | 115/60/1 | 4.1  | R-134a      |
| <b>MGF 8406</b> | 2     | 12    | 2       | 48.23 x 30 x 37.16          | 51.2 x 33.6 x 36.2         | 5 inch  | 242.88             | 1/2 | 115/60/1 | 7.2  | R-404a      |
| <b>MGF 8407</b> | 2     | 17.9  | 2       | 60.30 x 30 x 37.16          | 63 x 33.6 x 38.2           | 5 inch  | 275                | 1/2 | 115/60/1 | 7.8  | R-404a      |